

WELCOME!

CPRG Steering Committee

Dec. 15, 2023



**CLIMATE
POLLUTION
REDUCTION
GRANTS**

U.S. Environmental Protection Agency

INTRODUCTIONS



\$250 Million from the Inflation Reduction Act



One planning grant, three deliverables over 4 years



Priority Climate Action Plan (PCAP)

- Due **March 1, 2024**
- Near-term, implementation-ready, **priority greenhouse gas (GHG) reduction measures**
- **Prerequisite** for implementation grant



Comprehensive Climate Action Plan (CCAP)

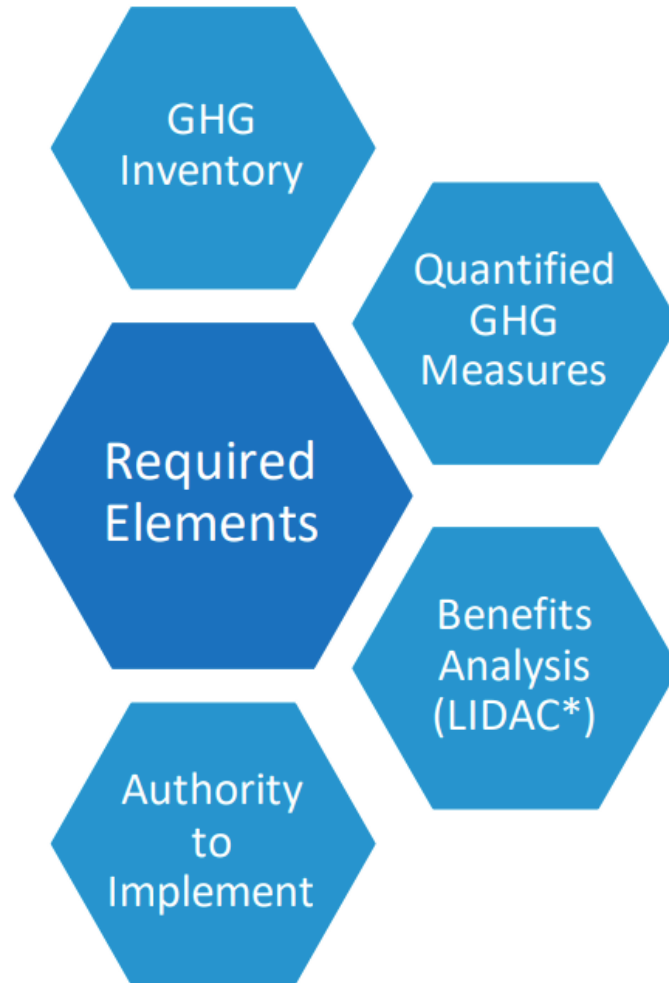
- Due in **2025** (later for tribes and territories)
- **All sectors** / significant GHG sources and sinks
- **Near- and long-term** GHG emission reduction goals and **strategies**



Status Report

- Due in **2027** (N/A for tribes or territories)
- **Updated** analyses and plans
- **Progress and next steps** for key metrics

PCAP Sub-Deliverables



- Due March 1, 2024
- Identifies near-term action items to prepare for implementation grants
- Can focus on specific sector(s) or sources
- Limited set of requirements that set foundations for informed decisions
- May build on previous climate planning efforts

Phase I Project Timeline

At-a-glance

INITIATION

Compliance, LIDAC research, Administration Prap, Hiring Contractors, Identifying Stakeholders

FALL
2023



SCOPING

Steering Committee Engagement, Identifying focus sectors, Collecting project ideas, Connecting with communities for Outreach

DEC
2023



DISCOVERY

Public engagement, LIDAC outreach, Focus sector GHG inventory, Measure identification and quantification

JAN
2024



ANALYSIS

Measure quantification, LIDAC benefit analysis, continued outreach and report prep

FEB
2024



CLOSURE

PCAP Submission, Implementation Grant Application Development

MAR
2024

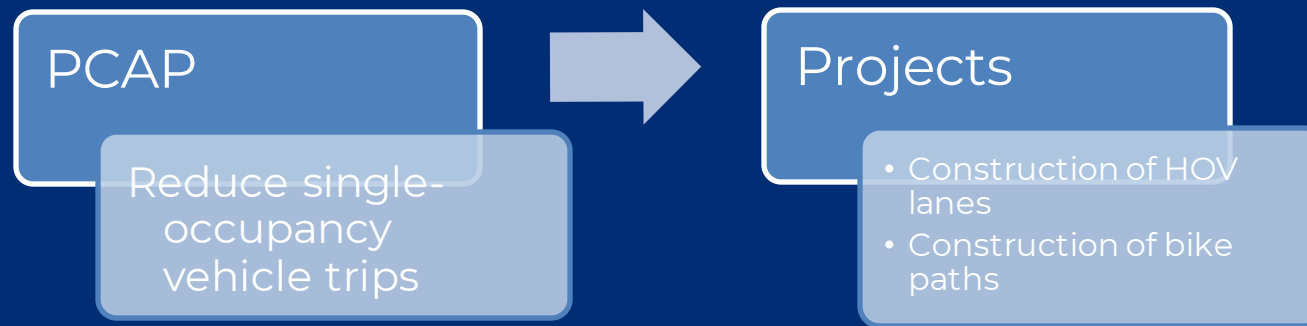




PCAP is directly tied to Implementation Grants

- \$4.3 Billion competition
- Only projects that are tied to a measure in the PCAP are eligible for funding.

Ex:



- PlanRVA, Localities, Government Agencies or Departments, Tribes, are eligible to apply, individually or in consortia.

PCAP is directly tied to Implementation Grants

- Limits on eligibility, number of applications, project types mean it will be very important for PlanRVA to coordinate this process.
 - Applicants may only submit
 - 1 application as an individual application
 - 1 application as lead applicant for a coalition
 - EPA will not award more than 1 grant for the same measure in the same location

PCAP is directly tied to Implementation Grants



Tier	Grant Ranges (million)	Funds Targeted for Each Tier (billion)	Anticipated Number of Grants to be Awarded
Tier A	\$200 to \$500	\$2	4-10
Tier B	\$100 to <\$200	\$1.3	6-13
Tier C	\$50 to <\$100	\$0.6	6-12
Tier D	\$10 to <\$50	\$0.3	6-30
Tier E	\$2 to <\$10	\$0.1	10-50
TOTAL		\$4.3 billion	30-115

Strong Projects Will...



Implement ambitious measures that will achieve significant cumulative greenhouse gas (GHG) reductions by 2030 and beyond



Achieve substantial community benefits (such as reduction of criteria and hazardous air pollutants), particularly in low-income and disadvantaged communities



Complement other funding sources to maximize these GHG reductions and community benefits



Pursue innovative policies and programs that are replicable and can be “scaled up” across multiple jurisdictions

Steering Committee

Purpose and
Objectives

Steering Committee Objectives

Give direction on
PCAP focus
sectors

Bring forth
strong Reduction
Measures for
PCAP

Provide feedback
to contractors

Review data and
public input

Review draft
measure lists and
reports

Set reduction
horizon and GHG
reduction targets

Steering Committee Objectives

Give direction on
PCAP focus
sectors

Bring forth
strong Reduction
Measures for
PCAP

Provide feedback
to contractors

Review data and
public input

Review draft
measure lists and
reports

Set reduction
horizon and GHG
reduction targets

Schedule

Friday, Feb. 2nd

9-11:30

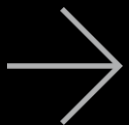
- VIRTUAL
- What we learned from public and LIDAC engagement
- Initial GHG inventory estimations

Friday Feb. 16th

9-11:30

- In-Person
- Present Draft PCAP report
- Discuss Implementation Grant Strategy





CPRG Steering Committee Kickoff Meeting

PlanRVA (Richmond MSA)



Deb Harris
Senior Director,
Climate Planning

Zeyu Hu
Senior Specialist,
Climate Planning

12/15/2023

Agenda

- ICF introduction
- Review of PCAP requirements
- Approach to PCAP development
- Next steps
- Questions

- **Global consulting and technology services provider** headquartered in Reston, VA
- **50+** years of energy and climate work
- **2K+** climate, energy, and environmental experts
- **100+** S&L clients supported in climate and energy planning



Fiona Wissell
Project Manager



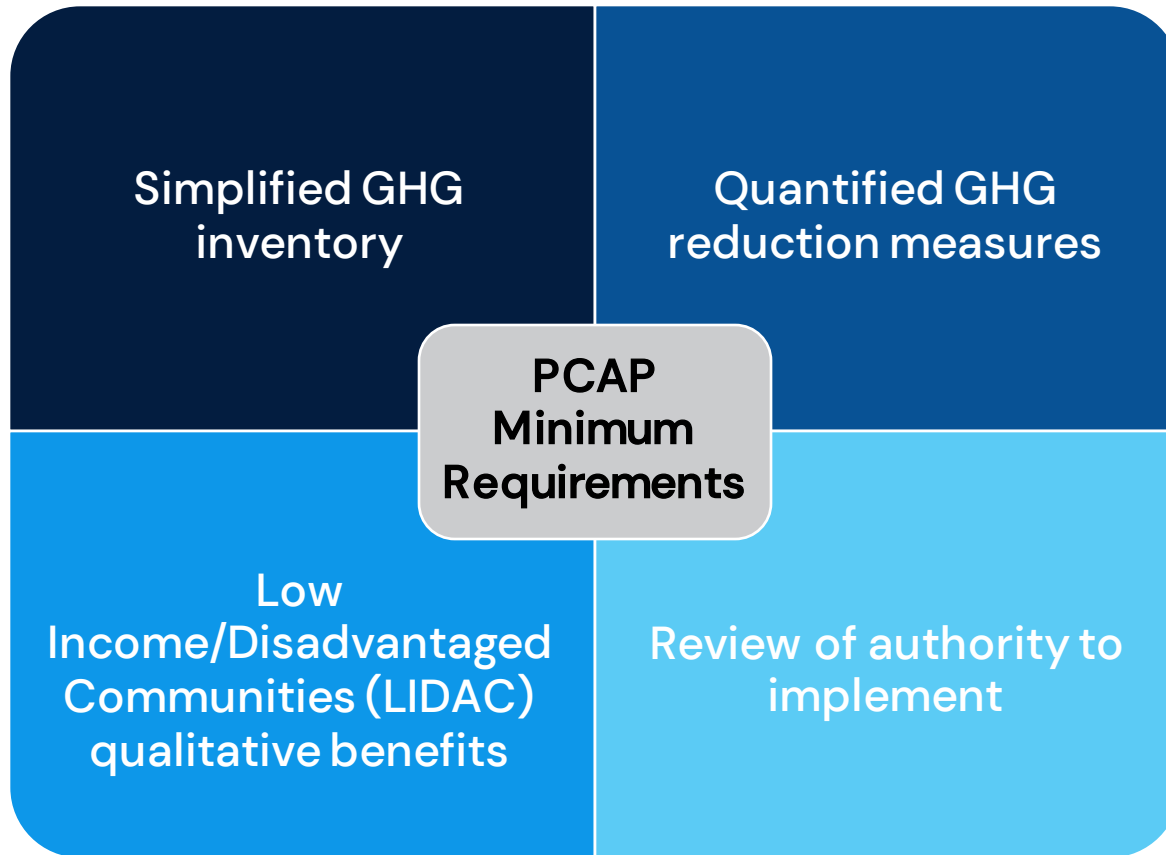
Zeyu Hu
Deputy Project Manager



Deb Harris
Project Advisor

- Narrative report with focused list of **near-term, high-priority, implementation-ready measures**.
- Can focus on a **specific sector or selected sectors and measures** – comprehensive planning can/should be done within the longer time frame for the CCAP (due summer/fall 2025).
- PCAP measures can **build on existing programs or projects and/or provide new ideas**.
- Meant to **help prepare for implementation grant applications** by identifying regional priorities, developing information for the GHG reduction measures that may inform implementation grant applications, and facilitating stakeholder relationships to support future implementation efforts.
- **Applications for implementation grants must seek funding to implement measures that are included in a PCAP** – understanding of NOFO evaluation criteria will help guide PCAP measure development and selection.

PCAP Requirements



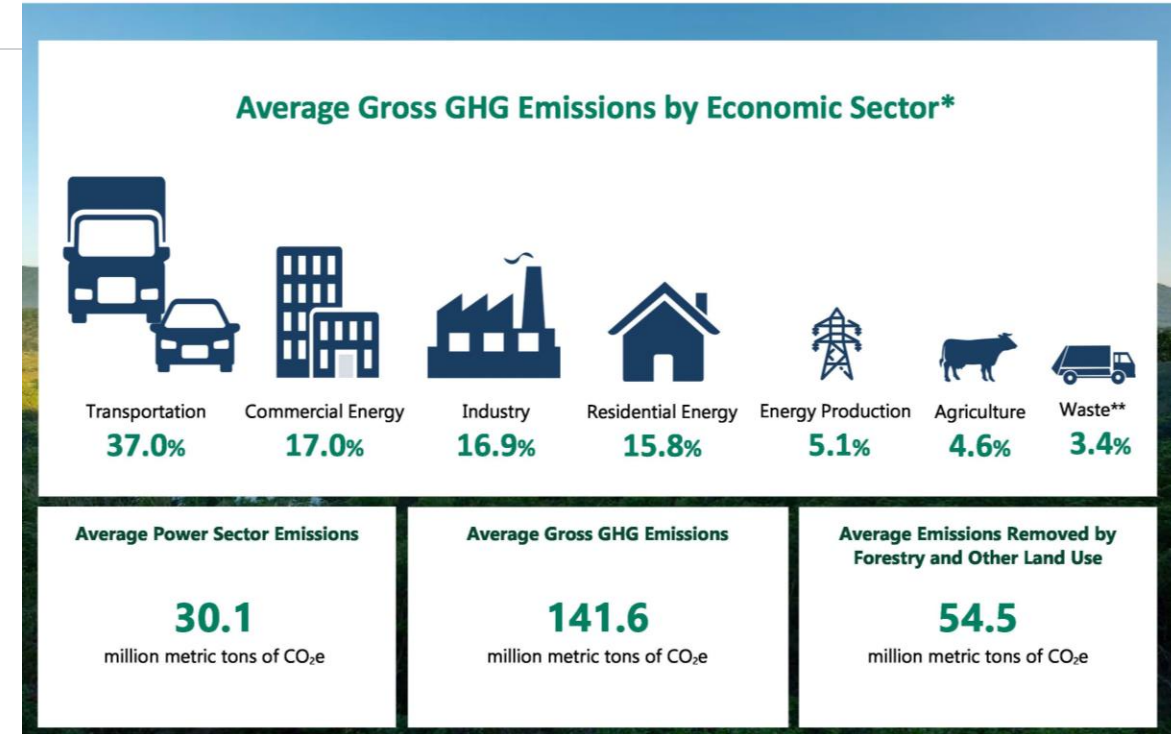
PCAP Outline

1. Introduction
 - a. CPRG overview
 - b. PCAP purpose and overview
 - c. PCAP scope
 - d. Approach to developing the PCAP (including technical and outreach)
2. Richmond MSA context
3. Simplified GHG inventory
4. PCAP GHG reduction measures
 - a. Summary of measures
 - b. For each measure
 - i. Description and GHG quantification
 - ii. LIDAC analysis
 - iii. Review of authority to implement
5. Next steps

Simplified GHG Inventory

- Does not need to be a comprehensive, but should cover sectors for which priority measures are included in the PCAP.
- EPA does not specify a base year.
- Given timing for GHG inventory development, we recommend:
 - Focus on select sectors based on PCAP GHG measures.
 - Develop emissions estimates for selected sectors using scaling methods and direct EPA GHGRP data.

2016-2019 Average Virginia Greenhouse Gas (GHG) Inventory

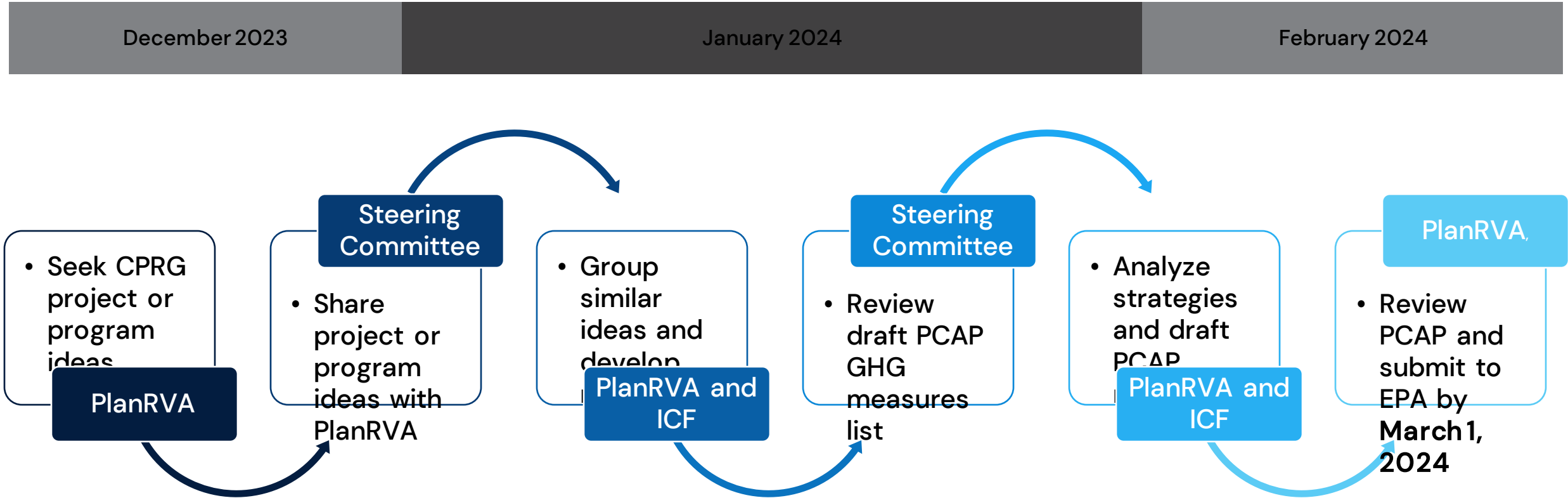


GHG Emissions Inventory Scaling

$$Inventory\ Data = \frac{Factor_{Inventory\ Data}}{Factor_{Available\ Data}} \times Available\ Data$$

Available Data is activity or emissions data available that needs to be scaled. *Inventory Data* is the activity or emissions data for the locality. *Factor* is the scaling factor data point for either the inventory data or the original available data. Potential scaling factors to use include, but are not limited to, activity data, population, or gross domestic product (GDP).

Selecting PCAP GHG Reduction Measures



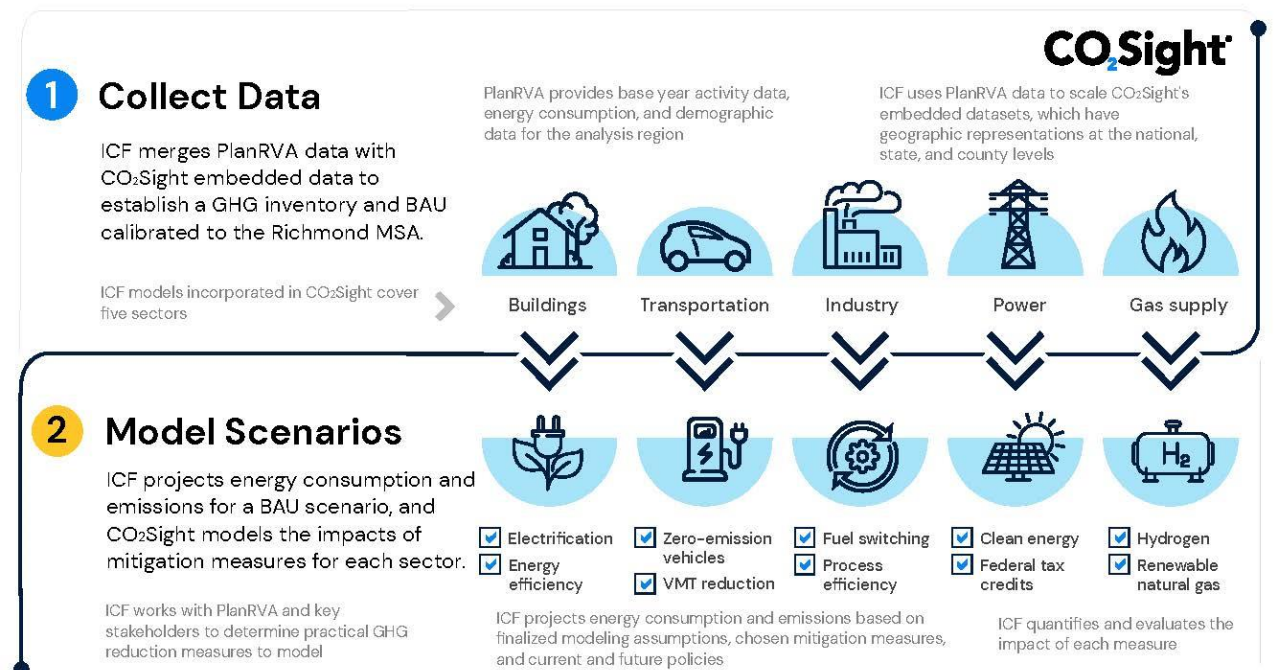
GHG Reduction Measure Quantification

- Method/tools are dependent on GHG measures selected.
- Align with available EPA data, resources, and tools, and ICF methods and tools.
- Draw on local and regional data if available (e.g., existing regional transportation modeling, vehicle registration information).

EPA Tools



ICF Tools



Other Required GHG Reduction Measure Information

Key implementing agency or agencies

Identified by PlanRVA and Steering Committee members.

Milestones for obtaining legislative or regulatory authority as appropriate

Related to authority to implement information, included only if needed and identified by PlanRVA and Steering Committee members with support from ICF.

Implementation schedule and milestones

Developed through consulting teams and PlanRVA facilitated discussions with Steering Committee members.

Identification of funding sources if relevant

PlanRVA and Steering Committee to identify sources if known. ICF to supplement with federal funding sources that could complement or support measures.

Expected geographic location if applicable

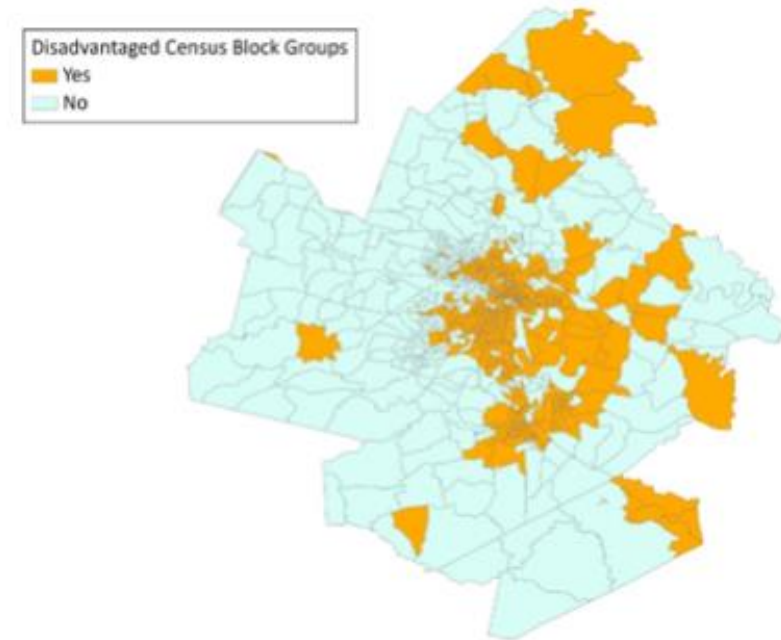
ICF to identify depending on the measure(s), consulting with PlanRVA.

Metrics for tracking progress

ICF to recommend consolidated set of metrics that apply to specific measures or groups of measures (e.g., number of homes retrofitted, number of clean buses purchased).

Low Income/Disadvantaged Communities Benefits

- Specific climate impacts or risks to which LIDACs are vulnerable.
- LIDACs that will be affected by the GHG reduction measures in the PCAP.
- Census block group ID (from EJScreen) for affected LIDACs and PCAP measures.
- Qualitative Discussion of the expected benefits to LIDACs associated with PCAP GHG reduction measures.
- Overview of planned and/or ongoing engagement with representatives and residents of LIDACs to inform PCAP and CCAP development and implementation.



Preliminary, draft LIDAC identification for Richmond MSA (EJScreen)

Authority to Implement

- Indicate whether there is existing statutory or regulatory authority to implement a measure, or whether such authority still must be obtained.
- Include a schedule of milestones for actions needed by key entities (e.g., legislature, administrative agency, etc.) for obtaining any authority needed to implement each listed program or measure.

ICF Immediate Next Steps

- ✓ Align project schedule with PlanRVA and Hodges/Florricane.
- ✓ Summarize method for simplified GHG inventory and begin to collect data.
- ✓ Work with PlanRVA, Steering Committee, and consulting team to identify and prioritize GHG reduction measures for the PCAP.
- ✓ Begin outlining the PCAP report.



Questions

THANK YOU!

Deb Harris

Project Advisor
Deb.Harris@icf.com

Fiona Wissell

Project Manager
Fiona.Wissell@icf.com

Zeyu Hu

Deputy Project Manager
Zeyu.Hu@icf.com



 [linkedin.com/company/icf-international](https://www.linkedin.com/company/icf-international)

 twitter.com/ICF

 facebook.com/ThisIsICF

About ICF

About ICF ICF (NASDAQ:ICFI) is a global consulting and technology services company with approximately 9,000 employees, but we are not your typical consultants. At ICF, business analysts and policy specialists work together with digital strategists, data scientists and creatives. We combine unmatched industry expertise with cutting-edge engagement capabilities to help organizations solve their most complex challenges. Since 1969, public and private sector clients have worked with ICF to navigate change and shape the future.

ABOUT HODGES

The Hodges Partnership is an award-winning public relations and marketing agency with extensive experience in media relations, community relations, social media and more.

We're different than other agencies. We're easy to work with, experienced, creative and passionate about communications.



Why Hodges?

No, you won't find someone named Hodges in our team bios. Our agency is named after Gil Hodges, the baseball legend and manager known for leading the Miracle Mets to victory in the 1969 World Series. Gil was known for his professionalism, humbleness and commitment to giving it 100 percent—the same qualities we focus on every day for our clients.

CPRG Communication Activities



Logo



Website



Social Media



Communications

Our Team



**JOHN
SARVAY**



**EBONY
WALDEN**



**JULIA
D'AGOSTINO**



**GRACE
CARTER**

COMMUNITY OUTREACH

Once the impacted communities have been identified, work with Plan RVA and The Hodges Partnership to connect with local organizations to develop an engagement plan to gather input, perspectives and ideas from local residents.

- Floricane and Plan RVA connections
- Local PDC leadership
- Local government agency connections
- Nonprofits and community organizations
- Faith-based organizations

Our Team

FACILITATION & PERSPECTIVE



**JOHN
SARVAY**



**EBONY
WALDEN**



**JULIA
D'AGOSTINO**



**GRACE
CARTER**

In an effort to engage a broad range of community members in the impacted LIDACs, we'll use a variety of data gathering approaches – including a survey, in-person and virtual focus groups, and in-person intercepts.

- Emails
- Phone calls
- Social media
- In-person intercepts
- One-on-one interviews
- Surveys
- Community discussions
- Focus groups

Our Team



**JOHN
SARVAY**



**EBONY
WALDEN**



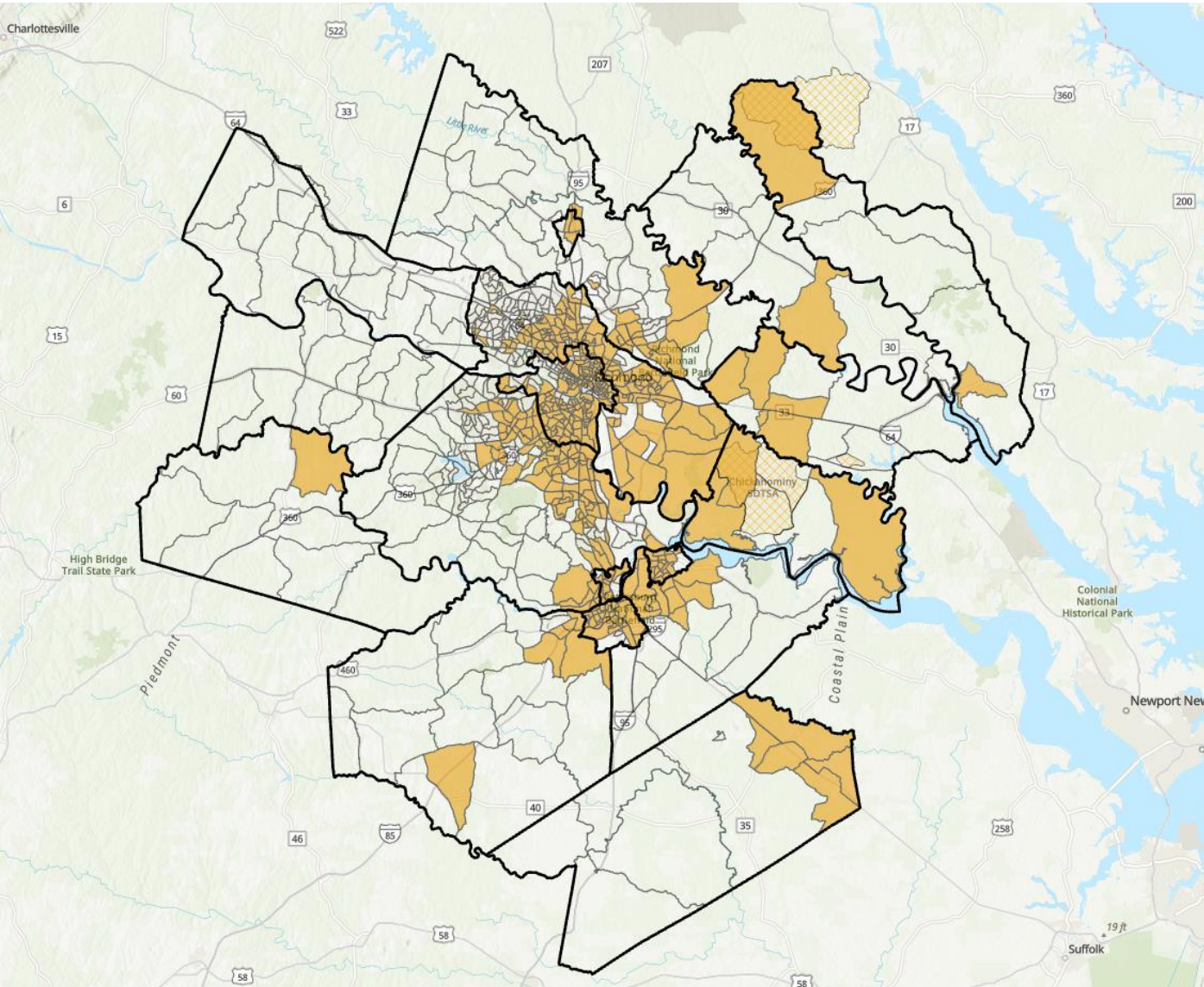
**JULIA
D'AGOSTINO**



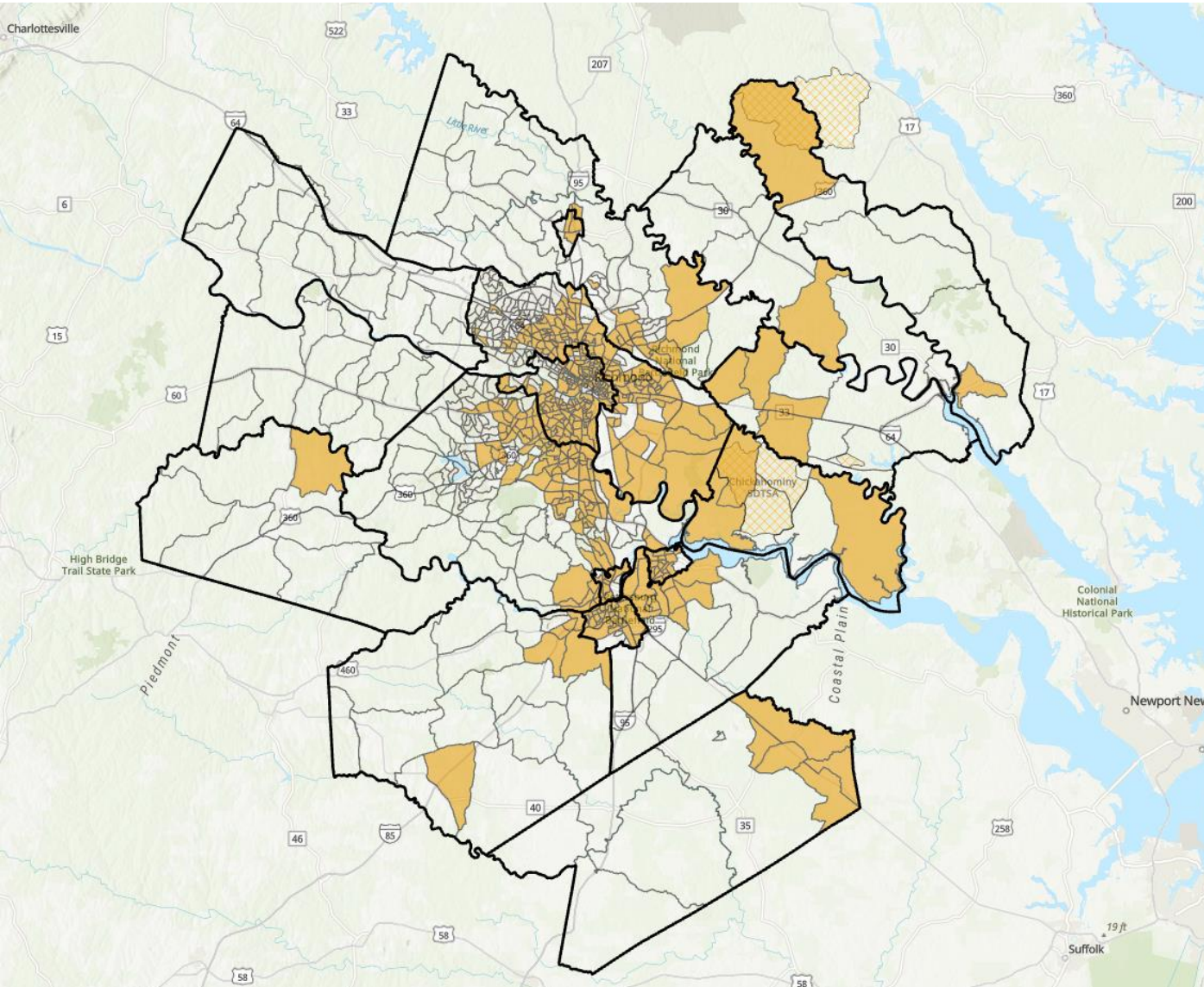
**GRACE
CARTER**

DATA INTEGRATION

In February, our team will work closely with Plan RVA and The Hodges Partnership to integrate the community perspectives and input into the final report.



- LIDAC = “Low Income Disadvantaged Community”
- “Community” = geographically bound or dispersed (such as Tribal citizens or migrant workers)
- Data from EJ Screen – used for determining what geographic communities are “disadvantaged” for IRA programs
- Census block level data



Criteria

- Classified disadvantaged in CEJST
- At or above 90th %ile for any Supplemental Indexes, compared to nation or state
- Tribal lands

Particulate Matter 2.5

Ozone

Diesel Particulate Matter

Air Toxics Cancer Risk

Air Toxics Respiratory HI

Toxic Releases to Air

Traffic Proximity

Lead Paint

Superfund Proximity

RMP Facility Proximity

Hazardous Waste Proximity

Underground Storage Tanks

Wastewater Discharge



BREAK

10 minutes



**CLIMATE
POLLUTION
REDUCTION
GRANTS**

U.S. Environmental Protection Agency